



CAVE B INN  
& Spa

*Hiking*

*“In every walk with nature  
one receives far more than he seeks.”  
~John Muir*

## Columbia River Trail

**Hiking Time: 1.5 hours if taken as a loop. 3 hours if combined with the Waterfall Trail. This hike consists of both flat and moderately steep descents/climbing, and is a marked trail.**

Taking you off the plateau and down into the gorge, this trail brings you to the property's northern opening to the Columbia River, directly across the water from Quilomene Dune & Bay and Sunset Ranch.

As you descend into the gorge from the main trailhead, please watch your step, as this is the trail's steepest descent. Soon the trail will head west toward the river.

As the trail finishes its western descent to the gorge floor, it opens to the Columbia River. Here you will find a large rocky beach scattered with tiny seashells and rocks. Just to the south is Bird Island—a popular landing area for migrating birds.

You may also be surprised to find in this area the remnants of human presence—namely, a 50+ year old car, and household appliances. These are remnants of a homestead that was back flooded by the creation of the Wanapum Dam.

### ***Return trails to Cave B Inn:***

From the northern Columbia River opening there are two choices for return to the Inn; retracing the River Hike Trail, or following the Waterfall Trail.

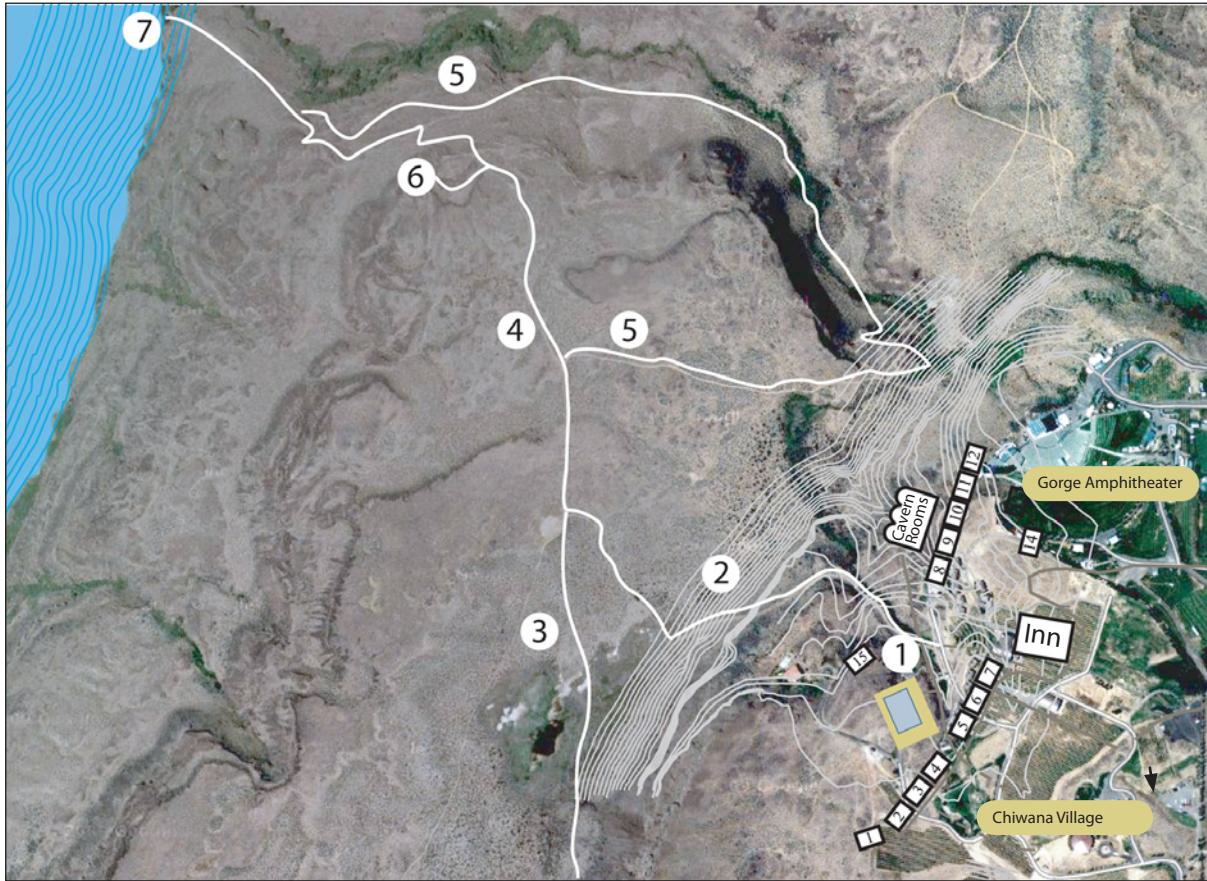
## Waterfall Loop Trail

**Hiking Time: 2.5-3 hours. The footing on this trail is sandy and easy. This is a marked trail which begins at the first marked “Y” off of the main trailhead.**

Accompanied by the sound of the water, you'll make your way deeper into the gorge. Soon you will see your first basalt cave straight ahead. The trail follows along the edge of the bluff, affording you a close up view of the looming immensity of these cliff shoulders, and the plentiful natural outcroppings, holes and caves in the rock face, perfect for sheltering birds and wildlife. Arrowheads believed to be of the Wanapum Indian Tribe have been found along these cliffs, as well as fossils. Listening Point: Stop and listen closely and you may hear the low cooing of doves from up in the basalt cliffs.

**Fitzpatrick Waterfall:** Unchanged for many years, this year-round waterfall is a natural beauty in every season. Please be aware that poison oak grows in abundance around the waterfall and stream, and use appropriate caution.

As you continue up and out of the gorge you will pass Cattail Meadow on your left, and view the awe-inspiring Gorge Amphitheater up above, where some of the world's best musicians come to perform in the summer and fall months.



1. Trailhead
2. Steep Slope
3. Babcock Bench Trail  
*(to Sunland Rd. and the Old Vantage Hwy)*
4. Columbia River Trail
5. Waterfall Loop Trail
6. Lookout
7. Rocky Beach



**Poison Oak**  
*watch out for this on the waterfall trail*

## *Hiking Awareness*

Please use caution when hiking, as the terrain can be rough. Wear sturdy, closed-toe shoes and bring plenty of water. During the summer months, we recommend hiking early in the morning, before the heat of the day. Be prepared for windy conditions in the afternoons.

Please respect the environment by not littering or disturbing any wildlife you encounter along the trails. This may include deer, rabbit, bobcats and rattlesnakes. Bobcats and snakes are not normally aggressive, so if you leave them alone they will do the same to you. If you encounter a snake, step away quickly and give it a wide area as you pass.

Please keep any pets on a leash for their own safety.

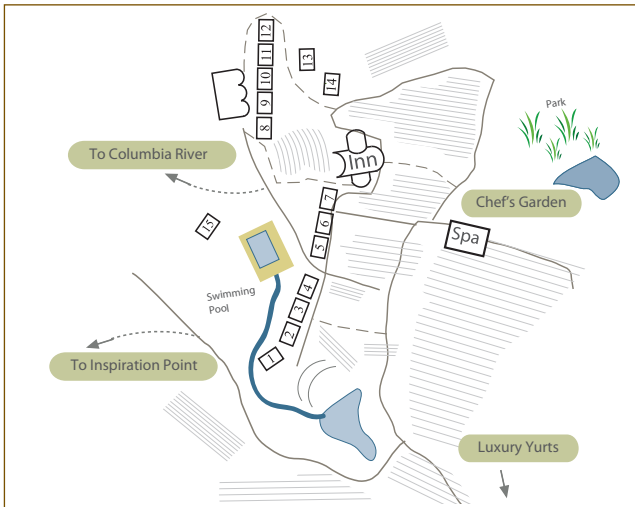
# Inspiration Point

## Hiking Time: 25 minutes.

This trail does NOT begin at the main trailhead. It is located at the southwest quarter of the property. This is a flat-terrain, unmarked walk.

To Begin: Take the paved path from the front doors of the inn through the vineyard, towards the chef's garden. After emerging from the path, take a right onto the paved road before you. Follow this road past the spa, towards the pond. Continue past the pond on your right and the vineyard on your left. Directly after the vineyard on the left side of the road you will find the gravel path trailhead. Approximately 1.5 blocks down the path you will turn right. Continue until you reach Inspiration Point's stunning overlook. The basalt cliffs at this point are unique in their dramatic spire configurations. The silence at this point is profound, and the view before you is sure to inspire.

*Please use caution and stay well back from the cliff edge.*



Cave B Inn & Spa | Cave B Estate Winery | Luxury Yurts of Cave B Inn

344 Silica Road NW, Quincy, WA 98848  
(509) 785-2283 | [www.cavebinn.com](http://www.cavebinn.com)